

SEEDBURO SAMPLE PANS AND CONTAINERS

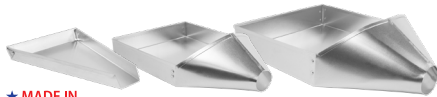


★ MADE IN
★ USA Left to right: 64P, 64BP

Triangular Sample Pans

The **No. 64** Sample Pan is made of mild steel and has an enameled, dark blue color. This pan has become a standard and features a tapered pour spout. The **No. 64P** and **No. 64BP** are the same sized pan as the **No. 64** but are made of durable, static resistant plastic.

- Blue Powdercoat Steel Triangular Sample Pan, 10" (L) x 10" (W) x 2 1/2" (H).....**No. 64**
- White Plastic Triangular Sample Pan, 10" (L) x 10" (W) x 2 1/2" (H).....**No. 64P**
- Blue Plastic Triangular Sample Pan, 10" (L) x 10" (W) x 2 1/2" (H).....**No. 64BP**



★ MADE IN
★ USA Left to right: 7, 31, 3

Spouted Sample Pans

These pans are made of aluminum and are ideal for controlled pouring of samples. The **No. 33** and **No. 31** feature a funnel-type pour spout.

- Spouted Sample Pan, 1 1/2 qt., 11 3/8" (L) x 7 1/4" (W) x 1 3/8" (H)**No. 33**
- Spouted Sample Pan, 3 qt., 15 1/4" (L) x 9 7/8" (W) x 2 1/8" (H).....**No. 31**
- Mini-Tin Pan, 7" (L) x 5" (W) x 7/8" (H) **No. 7**



44

Round Sample Pans

The **No. 44** sample pan series are available in the following sizes:

- Round Aluminum Sample Pan, 5" (D) x 1" (H)..... **No. 44**
- Round S.S. Sample Pan, 4 qt. Liquid (3.4 qt Dry), 9 1/4" (D) x 2 7/8" (H).....**No. 44-4**
- Round S.S. Sample Pan, 2 qt. Liquid (1.7 qt Dry), 8" (D) x 2 3/4" (H).....**No. 44-2**
- Round S.S. Sample Pan, 6 qt. Liquid (5.1 qt Dry), 11" (D) x 3 1/2" (H)**No. 44-6**



Left to right: 1420L, 1420S, 1420M

Seedbuero Anti-Static Weigh Boats

These durable, lightweight weigh boats are ideal for use with digital balances or small weighing applications. Resist temperatures to 200°F and flex for easy pouring. Rubberized polystyrene with anti-static properties. Designed with shallow shape and flat bottom to resist tipping. Sold in packages of 50 each. Available in white and blue.

- Small Weigh Boat, 1 3/4" (L) x 1 3/4" (W) x 3/8" (D), White..... **No. 1420S**
- Small Weigh Boat, 1 3/4" (L) x 1 3/4" (W) x 3/8" (D), Blue..... **No. 1422S**
- Medium Weigh Boat, 3 1/4" (L) x 3 1/4" (W) x 1" (D), White.....**No. 1420M**
- Medium Weigh Boat, 3 1/4" (L) x 3 1/4" (W) x 1" (D), Blue.....**No. 1422M**
- Large Weigh Boat, 5 1/2" (L) x 5 1/2" (W) x 7/8" (D), White.....**No. 1420L**
- Large Weigh Boat, 5 1/2" (L) x 5 1/2" (W) x 7/8" (D), Blue.....**No. 1422L**



Left to right: 630, 635

Quart And Pint Sample Bottles

Seedbuero's Quart and Pint Sample Bottles are made of a durable polyethylene. Includes an enameled plastic screw-top cap that has a gasket insert to provide an air-tight seal. The **No. 630** Quart Bottle meets the specifications of the USDA-AMS/FGIS for official inspection to minimize moisture loss and preserve quality while in short term storage. Both units feature a 1 3/4" neck opening.

- Quart Sample Bottle, 3 3/4" (L) x 3 3/4" (W) x 7" (H).....**No. 630**
- Replacement Cap Only for Quart Sample Bottle**No. 630C**
- Pint Sample Bottle, 2 3/4" (D) x 6" (H)**No. 635**
- Replacement Cap Only for Pint Sample Bottle**No. 635C**



Left to right: 625, 640, 645

Half Gallon and Gallon Containers

Our Half Gallon and Gallon Containers are made of a durable, high density polyethylene. The **5095** Half Gallon Container features an air-tight, snap-on lid. They are commonly used in inspection offices and laboratories and are great for "stackable" storage. Both the **No. 625** and **No. 640** containers have a screw-top plastic cap.

- Half Gallon Square Container, Snap-On Lid, 5" (L) x 5" (W) x 6 3/4" (H).....**No. 5095**
- Half Gallon Round Container with Snap-on Lid, 6" (D) x 5 3/4" (H).....**No. 645**
- Half Gallon Container, Screw-Top Cap, 5" (L) x 5" (W) x 6 1/2" (H)**No. 625**
- Gallon Container, 6" (D) x 10" (H) with 3 3/4" Neck Opening, Screw-Top Cap ...**No. 640**